

Chapter 3

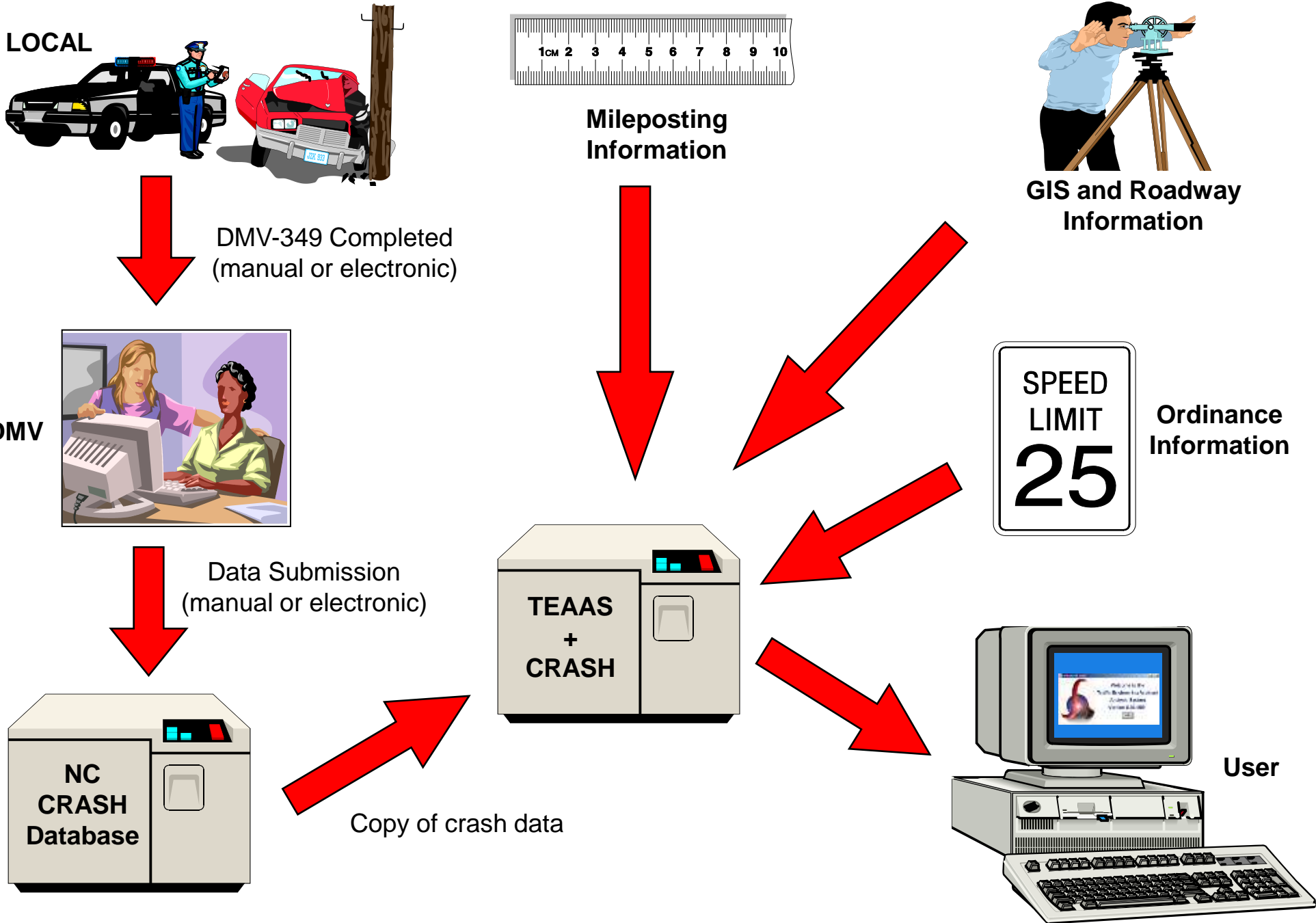
TEAAS Fundamentals



TEAAS

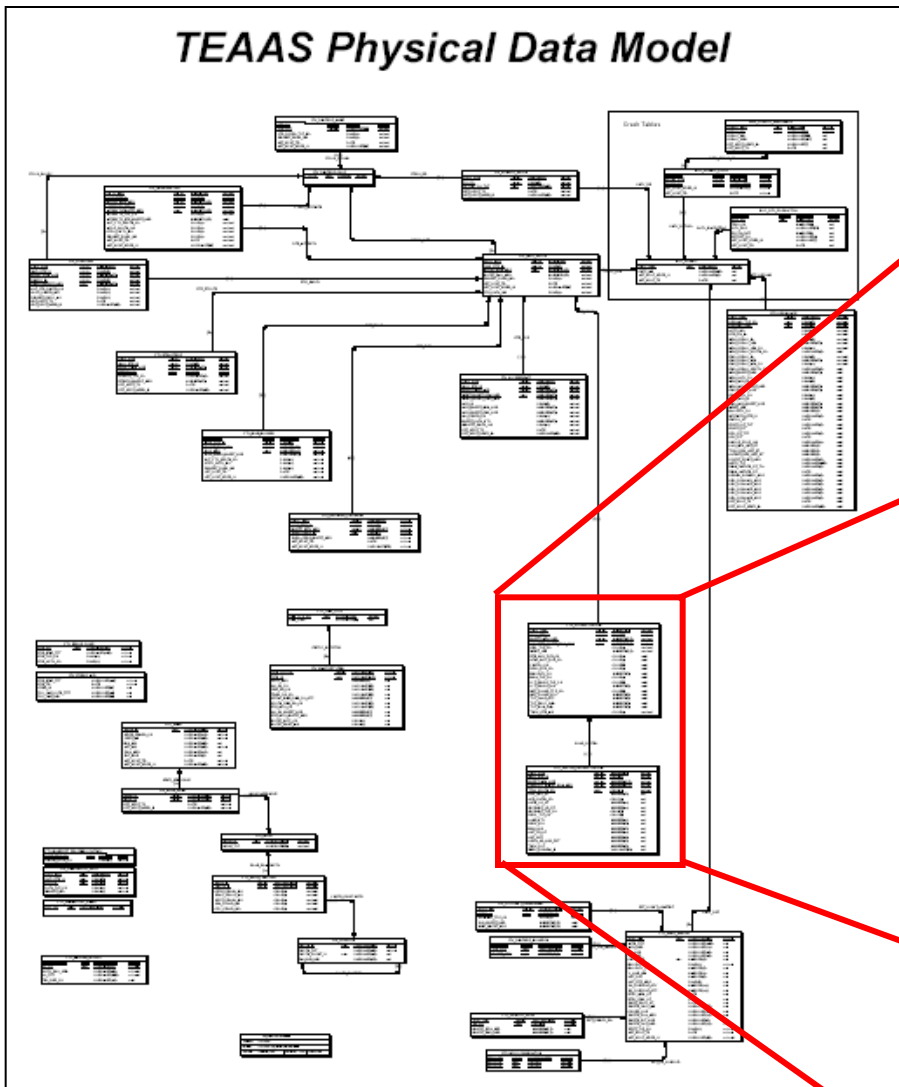
- Acronym for the “Traffic Engineering Accident Analysis System”
- Used by traffic engineering personnel and other agencies to perform crash analyses, review legal ordinances, etc.
- Database contains crash, roadway, mileposting, crash code, ordinance, and user information
- Information is mostly crash level (contact the NCDOT Traffic Safety Unit if you need unit level or person level information)

Database Structure and Data Flow



TEAAS Database Structure

TEAAS Physical Data Model



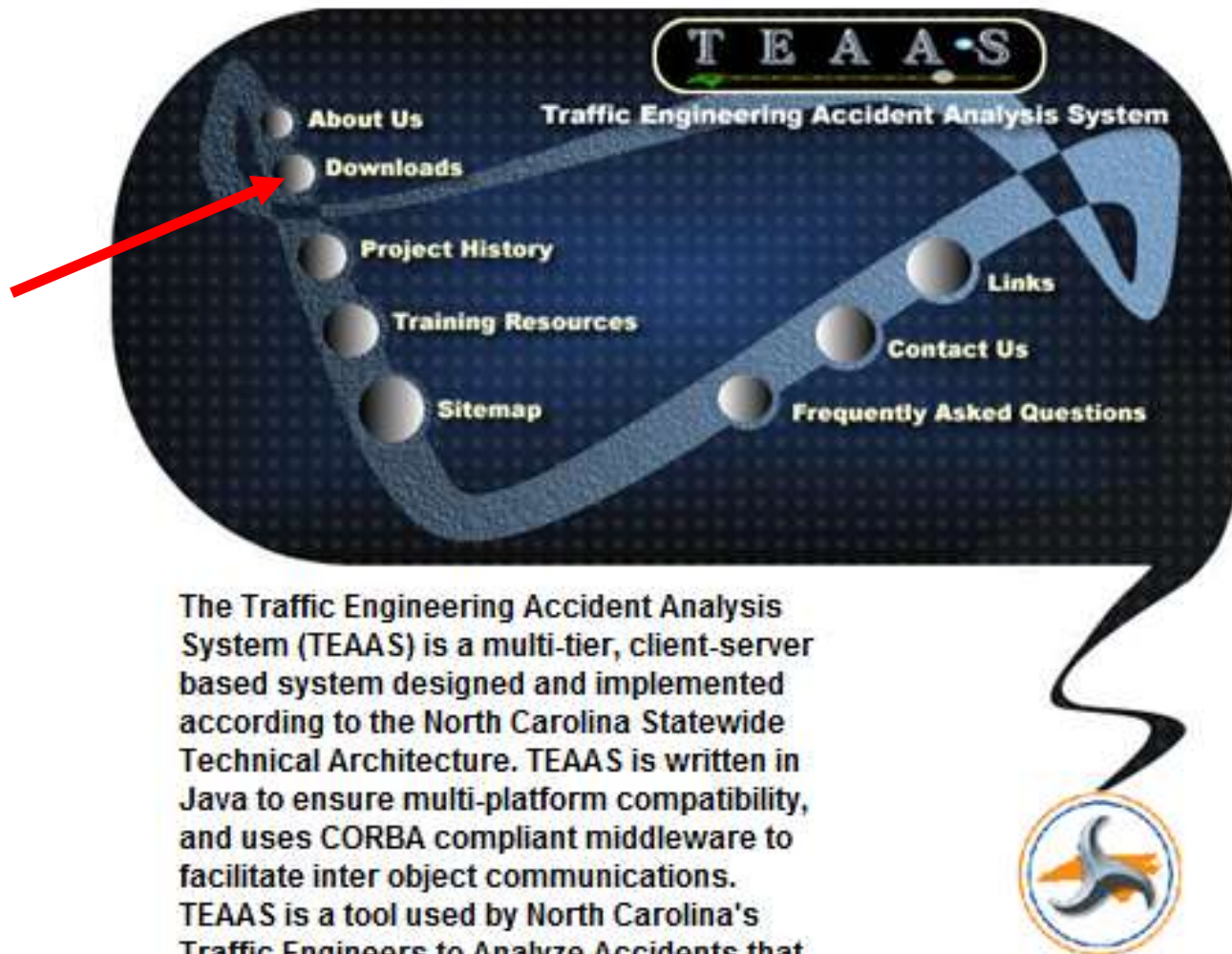
FTV_CHARACTERISTIC			
CNTY_NBR	<pk, fk>	NUMBER(3)	not null
INVD RTE ID	<pk, fk>	CHAR(8)	not null
MLPST BGN_NBR	<pk, fk>	NUMBER(6,3)	not null
<u>CHARSTC MLPST BGN_NBR</u>	<pk>	NUMBER(6,3)	not null
REC_TYP_CD		CHAR(1)	not null
SGMT_LEN		NUMBER(6,3)	not null
STE_HWY_SYS_CD		CHAR(1)	null
NTNL_HWY_SYS_CD		CHAR(1)	null
FNCTNL_CD		CHAR(2)	null
SPCL_SYS_CD		CHAR(1)	null
MNCPLTY_CD		NUMBER(3)	null
MDN_TYP_CD		CHAR(1)	null
LFT_SHLDR_TYP_CD		CHAR(2)	null
LFT_SHLDR_WID		NUMBER(2)	null
RGT_SHLDR_TYP_CD		CHAR(2)	null
RGT_SHLDR_WID		NUMBER(2)	null
TOT_LANE_QTY		NUMBER(2)	null
TOT_SRFC_WID		NUMBER(3)	null
TOT_MDN_WID		NUMBER(3)	null
TRCK RTE_IND		CHAR(1)	not null

CHAR_DRCTNL

[1..4]

FTV_DRCTNL_CHARACTERISTIC			
CNTY_NBR	<pk, fk>	NUMBER(3)	not null
INVD RTE ID	<pk, fk>	CHAR(8)	not null
MLPST BGN_NBR	<pk, fk>	NUMBER(6,3)	not null
<u>CHARSTC MLPST BGN_NBR</u>	<pk, fk>	NUMBER(6,3)	not null
TRVL DRCTNL_CD	<pk>	CHAR(1)	not null
SPD_UMT_RT		NUMBER(2)	null
ACS_CNTRL_CD		CHAR(1)	null
ADTN_YR_DT		NUMBER(4)	null
IMPRVMT_YR_DT		NUMBER(4)	null
IMPRVMT_TYP_CD		CHAR(2)	null
SRFC_TYP_CD		CHAR(2)	null
LANE_QTY		NUMBER(1)	null
SRFC_WID		NUMBER(3)	null
MDN_WID		NUMBER(2)	null
ADT_YR_DT		NUMBER(4)	null
ADT_CNT		NUMBER(6)	null
DSGN_HR_VLM_PCT		NUMBER(2)	null
TRCK_PCT		NUMBER(2)	null
SMP_L_SBDVSN_ID		VARCHAR(26)	null

Downloading TEAAS



The Traffic Engineering Accident Analysis System (TEAAS) is a multi-tier, client-server based system designed and implemented according to the North Carolina Statewide Technical Architecture. TEAAS is written in Java to ensure multi-platform compatibility, and uses CORBA compliant middleware to facilitate inter object communications. TEAAS is a tool used by North Carolina's Traffic Engineers to Analyze Accidents that occur on the state's roads. This information is used to help make North Carolina's roads as safe as they can be.

<https://dmvcrashweb.dot.state.nc.us/TEAAS/>

Downloading TEAAS (cont.)



MINIMUM SYSTEM REQUIREMENTS

- Windows XP SP3 or Windows 7, 80Mb available disk space on the C:\ drive, and 2Gb RAM. Detailed TEAAS Client Minimum PC Requirements can be obtained from [PC Requirements](#) Document.
- Java Version 6 Update 16 Minimum, Java Version 6 Update 31 Recommended

Step 1

- If you have a previous version (prior to 9.00.0000) of TEAAS Client installed on your PC, it should be removed.
 - Login as an administrator
 - Remove TEAAS from the install directory by right clicking on the TEAAS folder and selecting delete. The TEAAS folder is under C:\Program Files\NCDOT
 - If there is a TEAAS icon on the desktop and/or Start->All Programs->NCDOT delete them

STEP 2

- Click the *Install TEAAS Client* to install the TEAAS Client.

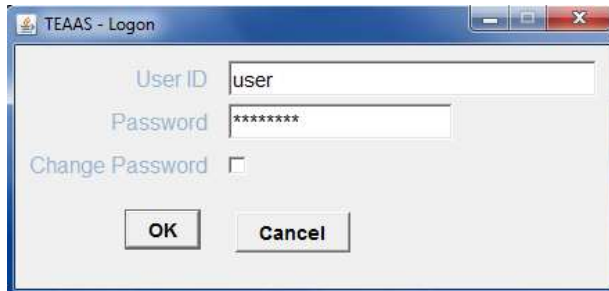
- The install process will create a Desktop Icon and a Menu Icon.
- If you run into problems with the installation, consult the TEAAS Client Installation document. View the document [here](#).

Logging on to TEAAS

- Double-click the TEAAS icon to launch the TEAAS application and the “splash screen” will appear:



- Next click on the “OK” button to open the logon screen



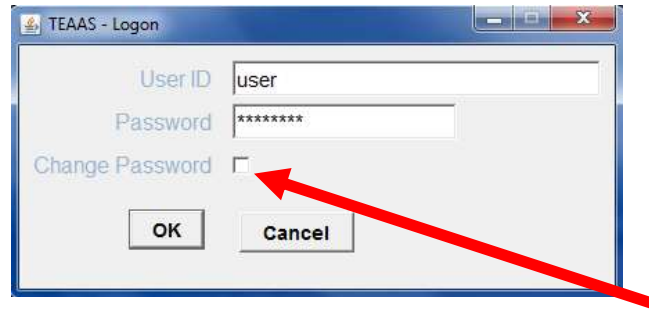
- Then enter your TEAAS User ID and password
- Contact the TEAAS administrator if assistance is needed
- Three consecutive unsuccessful logon attempts will cause the TEAAS application to automatically close

Changing The TEAAS Password

- Double-click the TEAAS icon to launch the TEAAS application and the “splash screen” will appear:



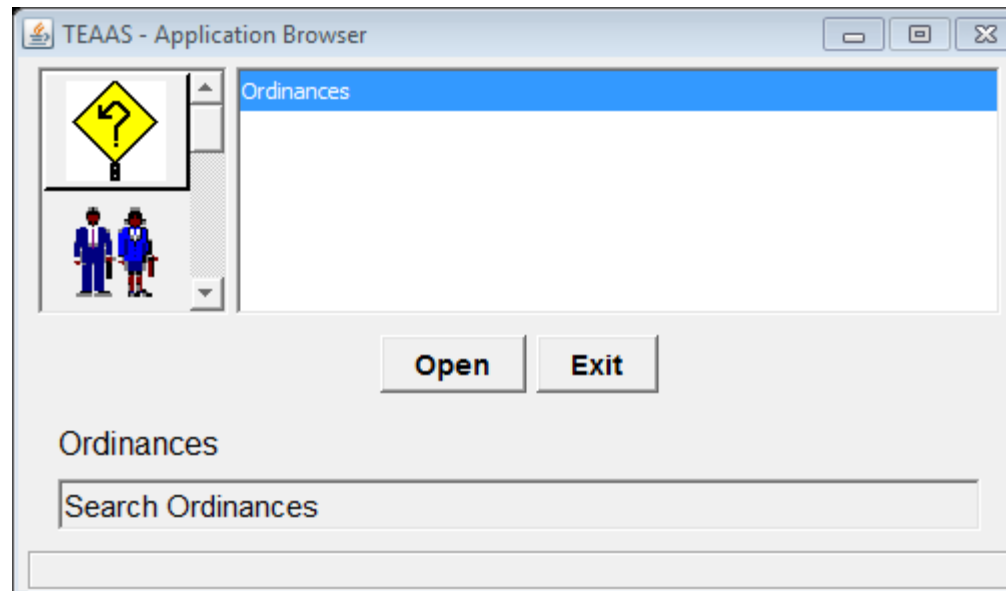
- Next click on the “OK” button to open the logon screen



- Then enter your TEAAS User ID and password
- Check the “Change Password” field
- The system will prompt you for a new password (and ask you to confirm it)

Application Browser

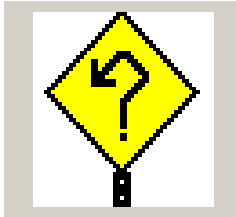
- Control center for TEAAS
- All major functions are shown on the vertical menu bar on the left side of the screen
- After selecting a major function icon, select sub-functions from the list box on the right



Application Browser Functions

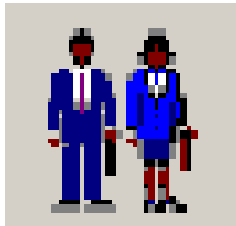
Function Name

Sub-Functions



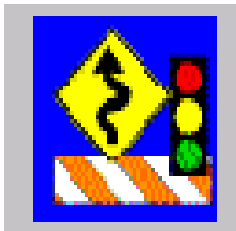
Ordinances

- Ordinances



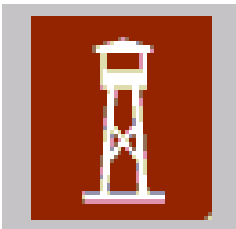
Users

- User information



Roadway
Features

- Intersections
- Boundaries
- Structures
- Mile Markers
- Railroad Crossing



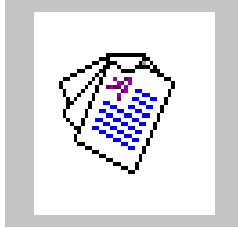
Feature Names and
Secondary Routes

- Street and Features Name
- Secondary Routes

Application Browser Functions

Function Name

Sub-Functions



Generate Reports

- Fiche Report
- Intersection Analysis Report
- Strip Analysis Report
- Fiche, Intersection, & Strip Reports Code Index
- Features Report
- Highest Order Segments Report
- Inc. Munic Report



Inventoried Routes and Highest Order Segments

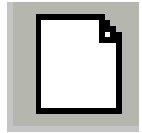


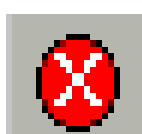


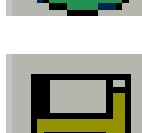
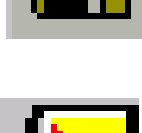
- Highest Order Segments
- Inventoried Routes



City/County-Wide Accident Reports

- City-Wide Accident Reports
- County-Wide Accident Reports

Tool Bar Icons

-  **New** - Creates blank form for entering a new record
-  **Modify** - Permits modification of the current record
-  **Delete** - Permits deletion of the current record
-  **Cancel** - Cancels a *New*, *Modify* or *Search* operation
-  **Search** - Allows specific search criteria
-  **Go** - Initiates search (based on specified criteria)
-  **Save** - Saves a record (either a new record, or changes to an existing record being modified)
-  **Close** - Closes the screen

Note that TEAAS has “mouse over” ability which will tell you the name of the button when you hold your cursor over it.

Audit Bar

- The audit bar appears at the bottom of all TEAAS screens that permit data entry
- Indicates what user last updated the current record and when it was updated

Last Update

User ID

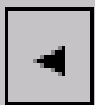
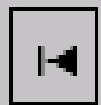
newuser

Date/Time

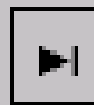
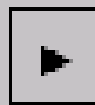
27 June 2000 12:16 PM

Navigation Bar

- Results of searches are returned and displayed one record at a time
- The navigation bar at bottom of screen shows both the number of the current record being viewed and the total number of records returned in search
- Arrow buttons allow navigation through the records
- No more than 500 records are returned in a search (except for ordinances which allow 2,000 records)



18 of 500



TEAAS Formats and Wildcards

Years should always be four (4) digits (i.e. “2004” and not “04”)

State road names should always have a space between the alpha characters and the numeric characters (i.e. “NC 150” and not “NC150”)

Asterisk (*) or percent (%) symbols can be used to represent multiple characters in wildcard searches

Question marks (?) can be used to represent single characters in wildcard searches

Some screens will only accept asterisks (*) for wildcard searches

Municipality boundary names are preceded by “ML-”

County boundary names are preceded by “CL-”

State boundary names are preceded by “SL-”